

Protexin[®]
VETERINARY

Smarter pet care, powered by biotics.

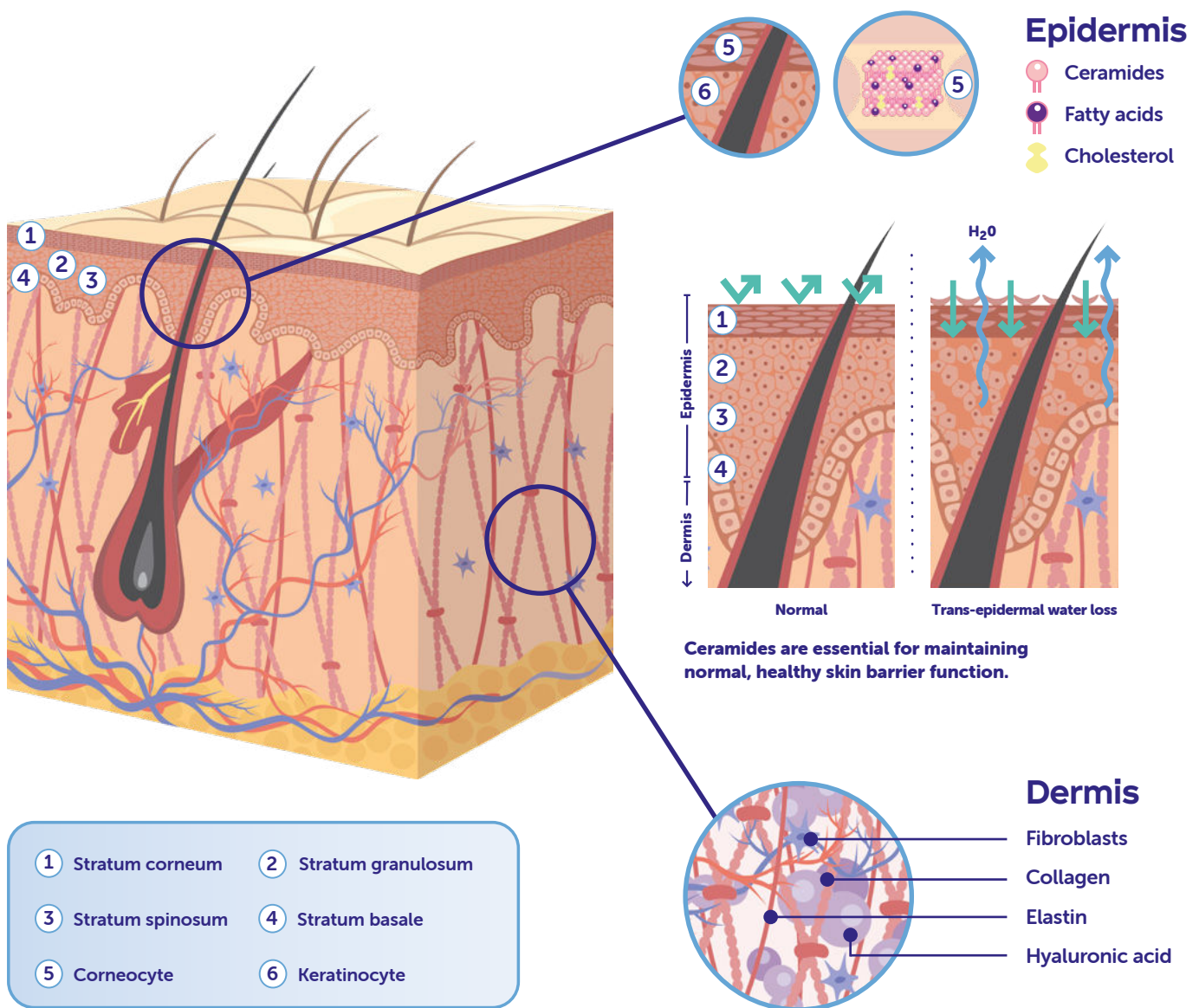
DermalEase for Dogs & Cats

Dual support for healthy,
nourished, and hydrated skin.



Healthy, nourished and hydrated skin is important for a healthy animal. The primary functions of the integumentary system include sensory and regulatory elements as well as protection such as minimising trans-epidermal water loss, immunological support and acting as a barrier between the external and internal environments.^{1,2,3,4} However, skin health, integrity and barrier function can be affected by many factors.^{5,6}

Skin structure

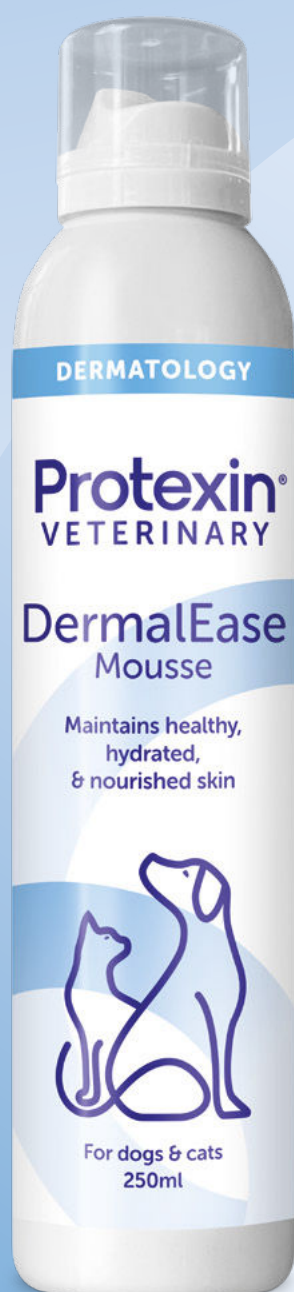


DermalEase

DermalEase is clinically proven⁶ to provide topical support for skin health.

Dual support

Dual support for healthy, nourished, and hydrated skin



Biosfeen[®]

Biosfeen supports healthy epidermal barrier formation⁷

Dermal[®]

Dermal supports a healthy dermis and normal skin hydration⁸

Hyaluronic acid (Dermial)

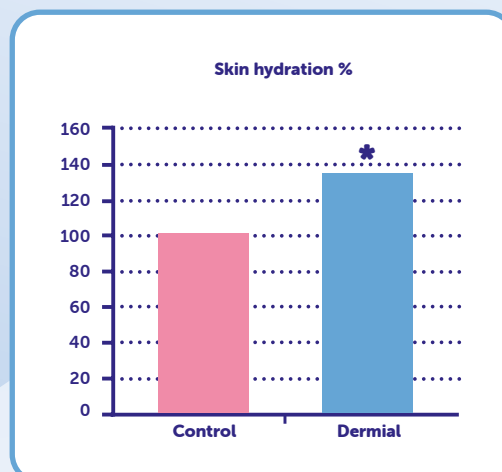
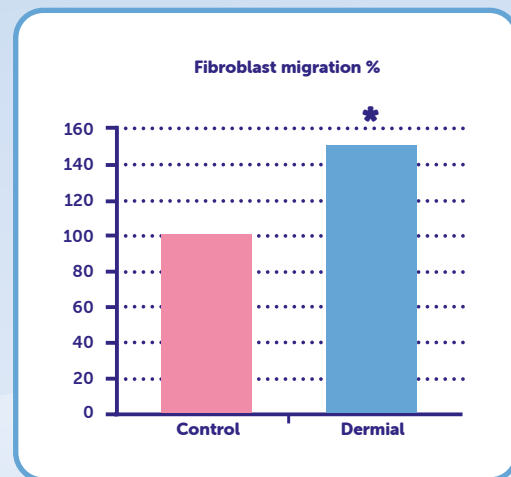
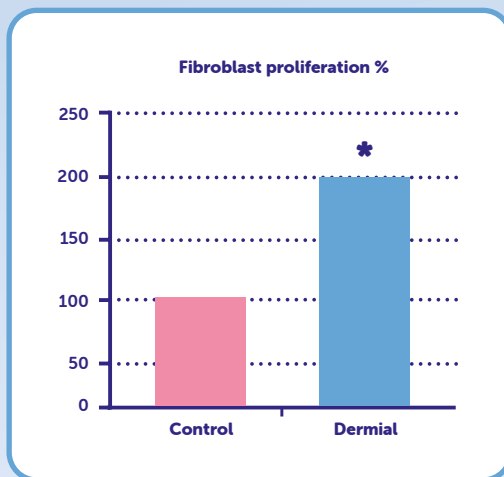
Hyaluronic acid is a glycosaminoglycan that has numerous essential physiological and physiochemical functions in the maintenance of healthy skin.⁹⁻¹⁴

Due to its ability to bind and retain water molecules, hyaluronic acid plays a key structural role in the connective tissue extracellular matrix (ECM), maintaining skin hydration, turgor and pliability.^{8,10-13}

Produced primarily by dermal fibroblasts,^{15,17} the ECM contains the majority of the skin collagen network and makes up the bulk of the dermis.¹⁶⁻¹⁹

Once thought primarily to be a structural molecule in skin, hyaluronic acid is now known to play a key role in the initiation of new skin production by promoting proliferation, differentiation and migration of dermal fibroblasts and keratinocytes, as well as upregulating dermal elastin and ECM production.^{6,8,10,11,20,21}

DermalEase contains Dermial, a source of glycosaminoglycans, mainly hyaluronic acid that has been shown to support the proliferation and migration of fibroblasts, and to help maintain normal skin hydration levels.⁸ See graphs below. *P < 0.05



Sphingolipids (Biosfeen)

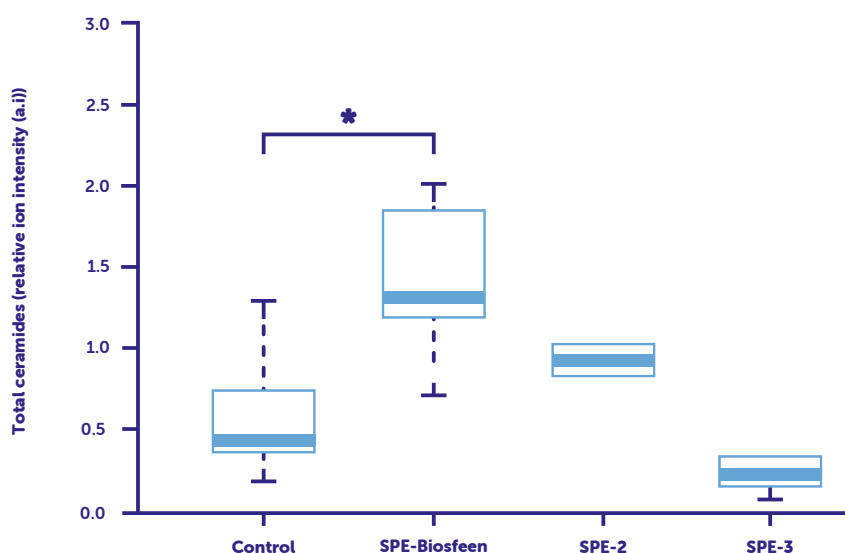
Sphingolipids are a family of bioactive waxy lipid molecules and a major component of healthy skin.²²

Alterations in the sphingolipid levels of the skin can have many effects, including dysregulation of the epidermal barrier, altered modulation of epidermal cells and variations in trans-epidermal water loss.²²

The most abundant epidermal sphingolipids are the ceramides,^{6,22} which are synthesised in keratinocytes in the stratum granulosum layer before being transported to the stratum corneum, the outermost epidermal barrier layer.^{7,22}

Ceramides make up 50% of the extracellular lipid matrix within the stratum corneum,²² with cholesterol and free fatty acids constituting the rest. The epidermal lipid matrix is a water-resistant protective barrier that regulates transport of exogenous substances across the skin and restricts trans-epidermal water loss.^{6,7,22-24}

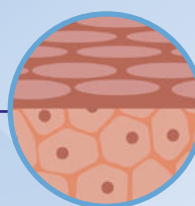
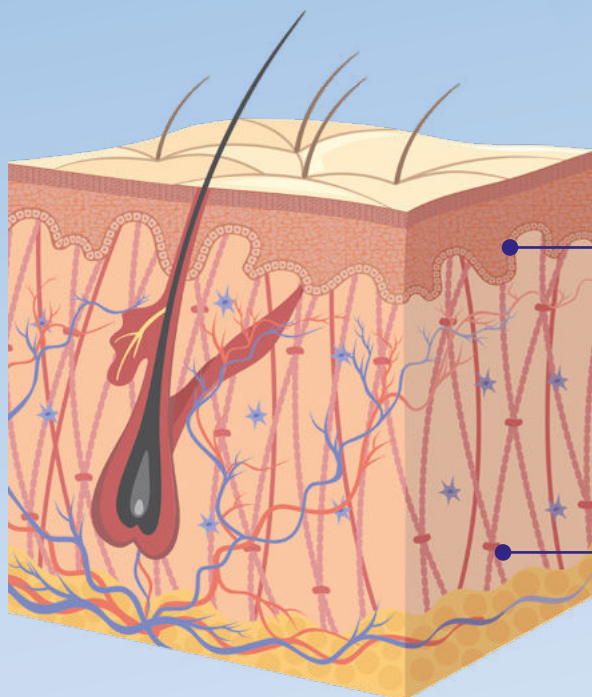
DermalEase contains Biosfeen, a unique sphingolipid extract composed of ceramides and sphingomyelin (an essential ceramide precursor) that has been shown to promote endogenous ceramide production,⁷ providing support for healthy skin barrier formation and normal skin hydration levels.^{7,23}



Box plot of median relative quantities (bold horizontal lines) of total ceramides in a controlled canine skin equivalence model and following treatment with three sphingolipid extracts (SPEs): SPE-Biosfeen*, SPE-2, SPE-3.⁷ Bottom and top of the box correspond to the 25th and 75th percentiles, respectively. *P < 0.05⁷

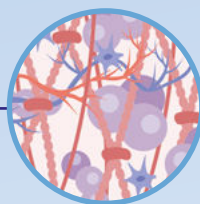
Ingredients

DermalEase contains the ingredients Biosfeen and Dermal.



Biosfeen

Supporting healthy epidermal barrier formation



Dermal

Supporting a healthy dermis and normal skin hydration



DermalEase Mousse

Instructions for use

Apply twice per week, for a minimum of 4 weeks, then drop down to a once weekly application. Use for as long as considered necessary.

Application

Apply the mousse directly to the dog or cat's skin, parting the fur if necessary. Gently spread the mousse over the application area until fully dispersed.

Application guidance

Avoid contact with the eyes, mucous membranes, mouth and other sensitive areas. Apply to clean, dry areas and leave a minimum of 48 hours until bathing. Once applied, prevent the animal from licking the area until dry.

Pack size	Indication for use
250ml	Suitable for focal or larger, diffuse areas





GASTROINTESTINAL

DERMATOLOGY

URINARY

CALMING

HEPATIC

JOINT

For information on our full range of products for dogs, cats and rabbits, please visit our website.

For references please visit
protexinvet.com/dermalease-refs or scan



Manufactured by:

ADM Protexin Ltd. Lopen Head, Somerset, TA13 5JH, United Kingdom
+44 (0)1460 243230 | info@protexin.com | protexinvet.com
DermalEase and Protexin are registered trademarks of ADM Protexin.
Dermal and Biosfeen are registered trademarks of BIOIBERICA, S.A.U.
All rights reserved.