

Gastrointestinal

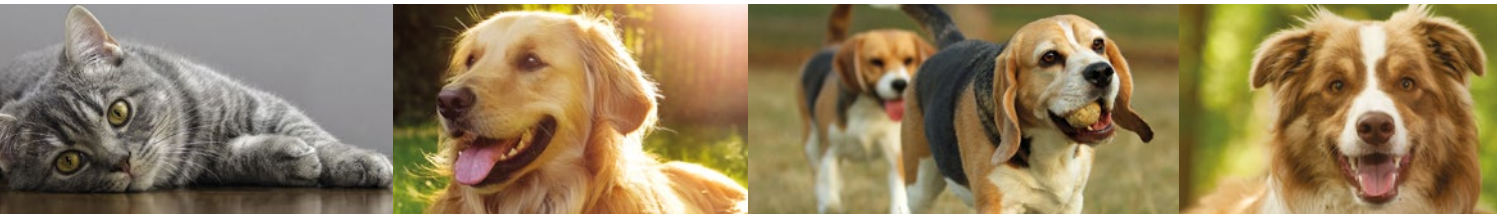


Gastrointestinal

For Dogs and Cats

The safe and natural choice for
gastrointestinal support

Gastrointestinal



The microbiota

Within the digestive tract there is a delicate balance between good and bad bacteria. This complex ecosystem, known as the microbiota, plays a vital role in maintaining your pet's digestive and general health.

Digestive disturbances happen when there is an imbalance of the microbiota in the digestive tract (known as a dysbiosis). This can be due to a sudden dietary change, treatment with antibiotics or stress (for example after travelling or kennelling). Our unique combination of probiotic and prebiotics help to support digestive function for healthier, happier dogs and cats.



Probiotics

ADM Protexin's gastrointestinal products contain the probiotic bacterium *Enterococcus faecium*. Probiotics reduce the growth and harmful effects of bad bacteria, restore the balance of beneficial bacteria and support the immune system.

Prebiotics

Prebiotics are non-digestible carbohydrates which stimulate the growth and activity of good bacteria in the digestive tract. Preplex® prebiotic is unique and contains fructo-oligosaccharide (FOS) and acacia (gum arabic).



Synbiotic D-C



Synbiotic D-C

Dysbiosis, an imbalance of the microbiota, can be caused by antibiotics, gastrointestinal disease, stress and dietary changes to name a few. This can result in a disturbance of GI function.

Synbiotic DC contains a high-level of probiotics and prebiotics to support your pet's microbiota and prevent a dysbiosis from occurring.



i Directions for use

One capsule daily to be pulled apart and contents placed on, or mixed with feed, or as advised by your veterinary surgeon.

Synbiotic D-C can be given long term to support gastrointestinal function, or during times of stress, antibiotic use and dietary change.

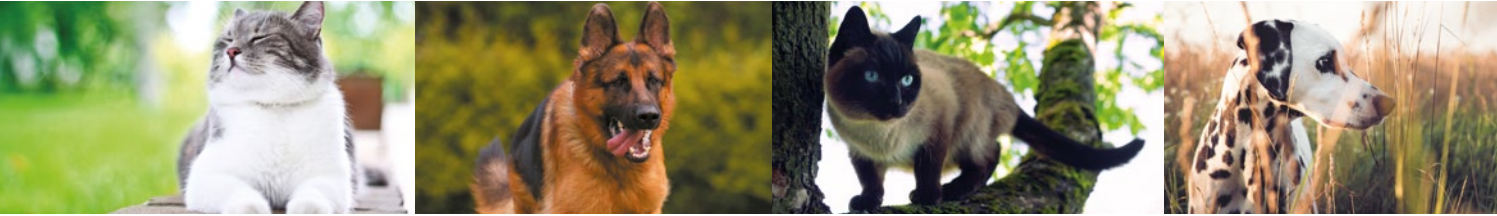


Gastrointestinal

The safe and natural choice for gastrointestinal support



Pro-Kolin⁺



Pro-Kolin⁺

For the management of short-term digestive disturbances, Pro-Kolin⁺ acts quickly to support your pet's gastrointestinal function.

Pro-Kolin⁺ helps to provide an immediate response to digestive disturbances by:

- Restoring the balance of the microbiota in the digestive tract
- Firming up stools
- Soothing the gut lining.



Available in 15ml, 30ml and 60ml syringes.



i Directions for use

Pro-Kolin⁺ contains a highly palatable artificial beef flavouring, making it easier to give to your pet.

You should give Pro-Kolin⁺ by mouth as directed below, for as long as recommended by your veterinary surgeon.

 		
Weight of pet (kg)	Volume	Frequency
Pro-Kolin ⁺ 15ml & 30ml		
<5kg	2ml	Twice daily
5-15kg	3ml	Twice daily
15-30kg	5ml	Twice daily
>30kg	7ml	Twice daily
Pro-Kolin ⁺ 60ml		
25-35kg	6ml	Twice daily
35-45kg	8ml	Twice daily
>45kg	10ml	Twice daily

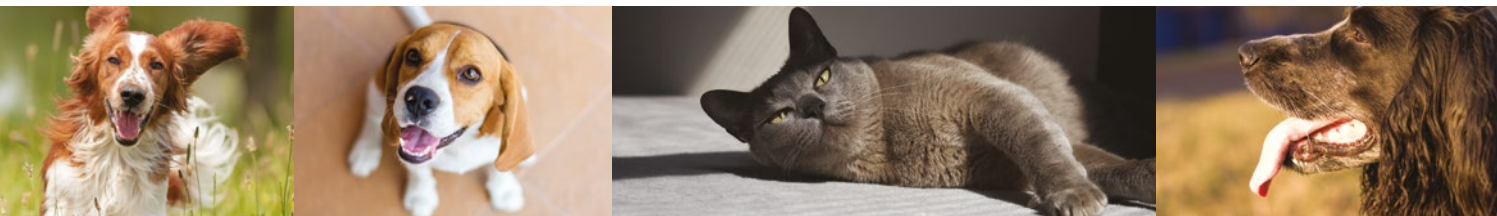


Gastrointestinal

The safe and natural choice for gastrointestinal support



Pro-Kolin Enterogenic



Pro-Kolin Enterogenic

When animals suffer from long-term or recurrent digestive disturbance, healthy gut function is disrupted. Long-term management is needed to support gastrointestinal function and subsequent damage to the lining of the bowel.



Pro-Kolin Enterogenic helps to manage long term gastrointestinal sensitivities by:

- Supporting normal gut function
- Repairing damaged intestinal tissue
- Providing and supporting the beneficial bacteria needed to restore gut health
- Maintaining Vitamin B12 levels, which are often depleted in long-term gastrointestinal disturbances

Directions for use

Pro-Kolin Enterogenic should be administered for a minimum of 30 days and for as long as recommended by your veterinary surgeon.

Pro-Kolin Enterogenic is supplied in a 4g sachet and can simply be sprinkled onto food.

 	
Weight of pet (kg)	Sachets per day
5kg or less	1/2
5-15kg	1
15-35kg	2
35kg or more	3



Gastrointestinal

The safe and natural choice for gastrointestinal support



Cobalazorb



Cobalazorb

Cobalazorb has been designed to help support normal serum cobalamin (vitamin B12) and folate (vitamin B9) levels.



Cobalazorb contains the optimum levels of cobalamin and folate to maintain normal bloods levels of these essential vitamins. It also contains Preplex prebiotics to help restore the gut's natural balance.



Available in boxes of 60 capsules.

Directions for use

Capsules are to be pulled apart and contents placed on, or mixed with feed.

 	
Weight of pet (kg)	Number of capsules
<10kg	½ capsule per day or 1 capsule every other day
10-20kg	1 capsule daily
>20kg	2 capsules daily

The number of capsules can be increased or decreased as needed to maintain normal cobalamin (vitamin B12) levels. Your veterinary surgeon will be able to advise on this.



Gastrointestinal

The safe and natural choice for gastrointestinal support



The safe and natural choice for gastrointestinal support



Distributed by: ADM Australia Pty. Ltd.

Suite 1 Ground Floor, 10A Julius Ave, North Ryde, Sydney, NSW 2113, Australia

Telephone: +61 2 8879 4888 Email: anz@protexin.com

Manufactured by: ADM Protexin Ltd, United Kingdom
protexinvet.com



Pro-Kolin⁺, Sybiotic D-C, Preplex and Protexin are registered trademarks of ADM Protexin Limited. All rights reserved.